



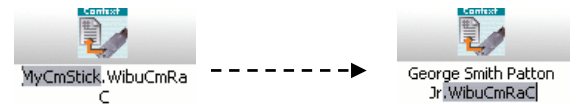
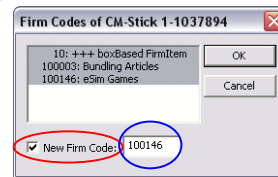
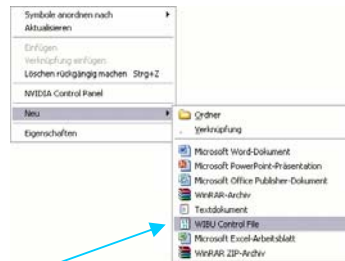
P.O. Box 4443 ◦ Mountain View, CA 94040 ◦ USA
Fax: +1-(650)-257-4703

How to set up your CodeMeter for multiple LAN licenses

If you want to set up Steel Beasts for an evaluation in a network context, please follow the procedure described on the next page.

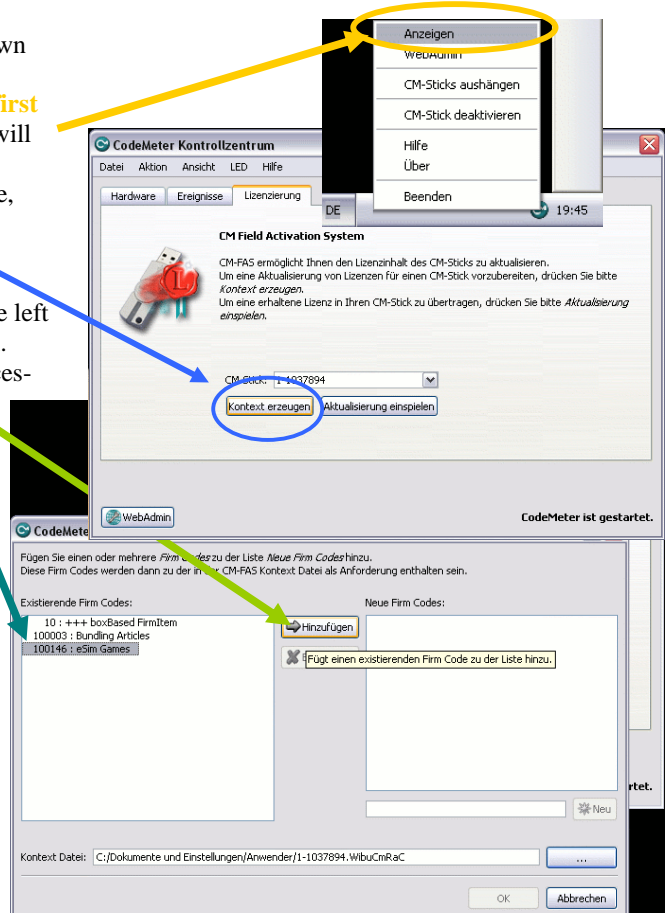
In case that your evaluation license has expired, eSim Games can extend it if you follow the procedure as described here:

- 1) First of all, we need you send us a “Wibu Control File” which allows us to reprogram the license information in your CodeMeter stick. Right-click a spree space on your desktop to bring up the context menu, and then select **New... Wibu Control File**.
- 2) This will bring up a dialog box. Simply click on the button **Create** which then opens another one. Now, here’s the crucial part: You need to checkmark **New Firm Code** and then to enter eSim Games’ vendor ID, **100146**. Finally, click on **OK**.
- 3) It can help us to avoid confusion if you give the file a unique name, e.g. your name and invoice number (see the example to the right); please **keep the file extension** intact:
- 4) Attach the control file to an email, and send it to us.



For some the suggested method doesn’t work for unknown reasons. There is fortunately an *alternative method*:

- 1) Right-click the CodeMeter icon and select the **first entry from the top** of the context menu. This will start the CodeMeter Control Center (“CCC”).
- 2) In the CCC, select the third tab, **Licensing**. Here, click on the button **Create Context**.
- 3) Highlight the entry **100146: eSim Games** in the left half of the window and click on the **Add button**. Change the path for Wibu Control File if necessary and click on “OK” to complete. You’re done! ☺



Windows Vista Users

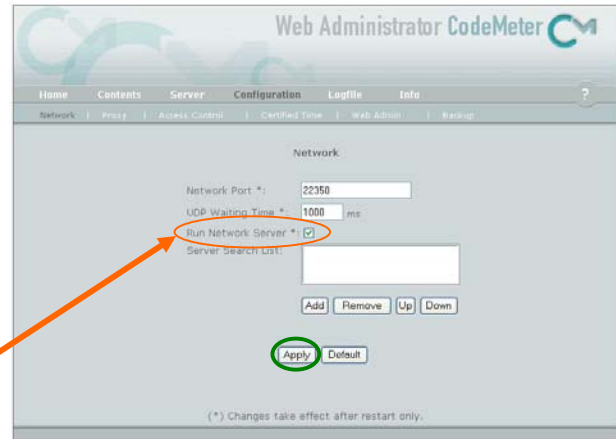
Windows Vista may require the following additional steps to set up SB Pro properly. Depending on your version you may need to download the 64 bit CodeMeter runtime from www.CodeMeter.com. In addition, be sure to install the latest “end user resist” version of DirectX 9.0c which can be found at www.Microsoft.com if it should not be included on your installation CD of SB Pro.



P.O. Box 4443 ◦ Mountain View, CA 94040 ◦ USA
Fax: +1-(650)-257-4703

eSim Games will send you back a Wibu Control File by email which you can load into your existing CodeMeter key either by simple double-clicking (if the CodeMeter key is plugged in), or by Right-clicking and selecting “Update CM stick” from the context-sensitive menu.

After this, the CodeMeter runtime software must be prepared to provide the secondary license to other computers that are connected to the primary computer by LAN connection. Start the Web Admin from the CodeMeter tray icon’s context menu, and go to “Configuration... Network”. Checkmark the option *Run Network Server* as shown. Click *Apply*, and close the Web Admin. Provided that the specified port to broadcast the license is not blocked by firewall software, you can now run Steel Beasts Pro PE on two computers simultaneously from a single CodeMeter stick. Have fun!



Sincerely yours,

Nils Hinrichsen,
Director, Sales & Customer Support