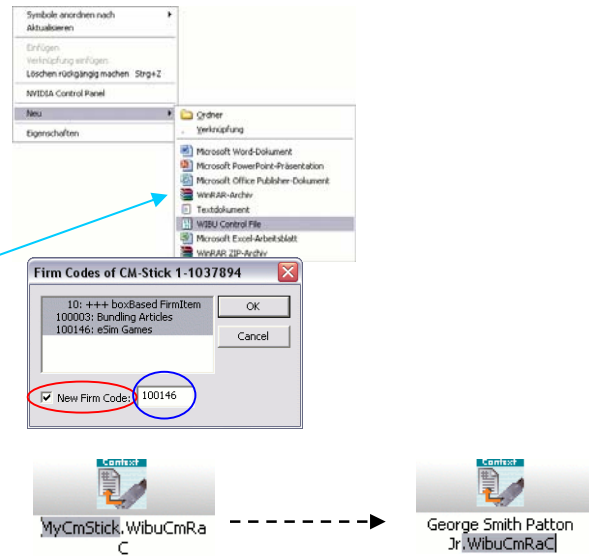


How to set up your CodeMeter for multiple LAN licenses

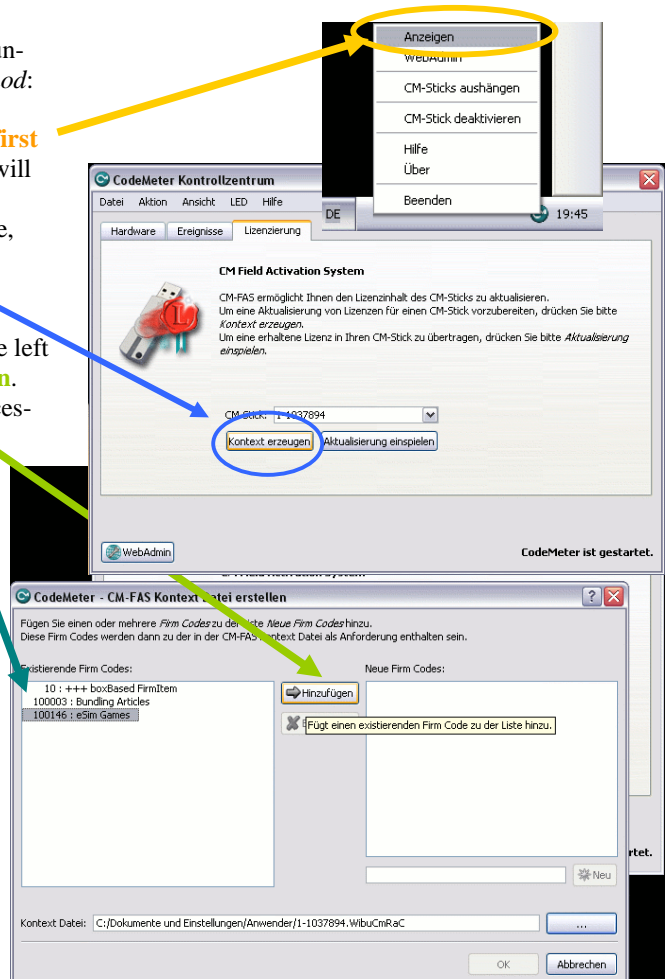
Thank you for your interest in secondary licenses for Steel Beasts Pro PE. If you already own a copy of Steel Beasts and just want to add more licenses to play with your friends or family members, please go through the following procedure:

- 1) First of all, we need you send us a “Wibu Control File” which allows us to reprogram the license information in your CodeMeter stick. Right-click a spree space on your desktop to bring up the context menu, and then select [New... Wibu Control File](#).
- 2) This will bring up a dialog box. Simply click on the button *Create* which then opens another one. Now, here’s the crucial part: You need to checkmark *New Firm Code* and then to enter eSim Games’ vendor ID, **100146**. Finally, click on *OK*.
- 3) It can help us to avoid confusion if you give the file a unique name, e.g. your name and invoice number (see the example to the right); please **keep the file extension** intact:
- 4) Attach the control file to an email, and send it to: sales@eSimGames.com.



For some users the suggested method doesn’t work for unknown reasons. There is fortunately an *alternative method*:

- 1) Right-click the CodeMeter icon and select the **first entry from the top** of the context menu. This will start the CodeMeter Control Center (“CCC”).
- 2) In the CCC, select the third tab, *Licensing*. Here, click on the button **Create Context**
- 3) Highlight the entry **100146: eSim Games** in the left half of the window and click on the **Add button**. Change the path for Wibu Control File if necessary and click on “OK” to complete. You’re done! ☺

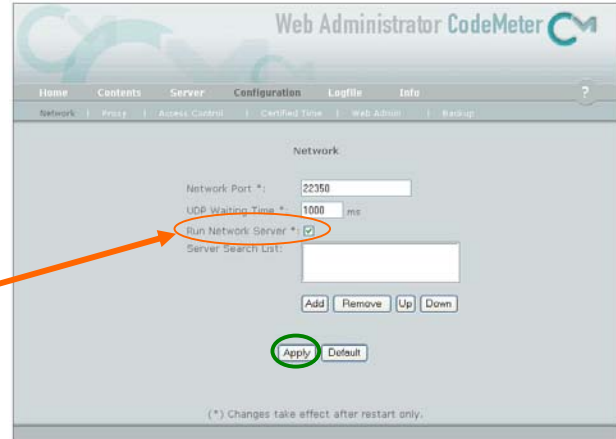




After your successful payment, eSim Games will send you a Wibu Control File by email which you can load into your existing CodeMeter key either by simple double-clicking (if the CodeMeter key is plugged in), or by Right-clicking and selecting "Update CM stick" from the context-sensitive menu.

After this, the CodeMeter runtime software must be prepared to provide the secondary license to other computers that are connected to the primary computer by LAN connection. Start the Web Admin from the CodeMeter tray icon's context menu, and go to "Configuration... Network".

Checkmark the option *Run Network Server* as shown. Click *Apply*, and close the Web Admin. Provided that the specified port to broadcast the license is not blocked by firewall software, you can now run Steel Beasts Pro PE on two computers simultaneously from a single CodeMeter stick. Have fun!



Sincerely yours,

Nils Hinrichsen,
Director, Sales & Customer Support